



Don't Forget About Special Recyclables Electronics, HHM and Small Appliances

- Recycle all your electronics, small appliances and Household Hazardous Materials (HHM), but not in your curbside recycling cart. Electronics and small appliances may contain metals that are harmful to the environment if not recycled properly. HHM are solid, liquid, compressed gas and aerosol products typically used in the home that are flammable, corrosive or poisonous.
- Schedule a pick-up of electronic waste, small appliances and scrap metal by calling 703-228-6570 or online at recycling.arlingtonva.us/residential. Small appliances and scrap metal can also be taken to the Inert Materials and Scrap Metal Drop-off Facility located at the EPRY.
- HHM is accepted free of charge at the HHM Facility and Electronics Collection and Recycling Center (ECRC). Electronics can be dropped off too although a small fee may apply to some items. For more information, call 703-228-6832 or visit recycling.arlingtonva.us/residential/electronics-metal/ and recycling.arlingtonva.us/household-hazmat/.

TIP...Take advantage of the biannual E-CARE event in the spring and fall. You can safely dispose of HHM, bikes, metal, shoes, clothing and other recyclable items.



Use Your Resources

Need Help? There are four easy ways to connect with the Solid Waste Bureau.

- Online: Visit recycling.arlingtonva.us/residential.
- Mobile Download: Search "ArlingtonVA Service Requests" on the App Store for iOS devices or Google Play Store to use our Mobile phone service request app.
- Phone: Call 703-228-6570, Monday through Friday from 8 a.m. to 5 p.m. to speak with a representative. Service requests can also be made outside of business hours, 24 hours a day, 7 days a week by calling 703-228-6570 (option 2). Please have your account number available.
- Email: Send an email to descallcenter@arlingtonva.us.

Siga estos consejos para reciclar correctamente y tirar menos basura.

- Ponga los materiales sueltos de reciclajes en su carrito azul o en una bolsa de papel. Los materiales reciclables que no caben en el carrito azul deben colocarse en una caja de cartón o en un recipiente de reciclaje.
- Vacié los contenedores de comida antes colocarlos en el carrito azul.
- Las almohadillas aire hechos de plástico que se usan para empaque deben de llevarlas a su supermercado local para reciclarlas junto con las bolsas de plásticos.
- Llevar una taza de café reutilizable a su tienda de café favorita y use bolsas de plástico reutilizable en su supermercado para reducir los desechos.
- El único papel que deben desecharse en el contenedor de basura son las toallas de papel, servilletas, y productos de papel manchado o ensuciado de comida. Coloque los periódicos, los cartones, las cajas de jugo, leche, vino y caldo de cartones, cajas de cereal y alimentos, papel mezclado, libros y revistas en su carrito azul de reciclaje.

Servicios de Reciclaje en el EPRY

- Deposite los desechos alimenticios (o las sobras de comida)
- Trituración de papel gratis
- Deposite productos de cerámica, concreto, arena, y ladrillo
- Para todos los residentes, recogida de mantillo de hojas y madera disponible gratis.

Find us on Social Media:

twitter.com/ArlingtonDES
facebook.com/ArlingtonDES
secure.flickr.com/photos/ArlingtonDES
youtube.com/user/arlingtoncounty

DEPARTMENT OF ENVIRONMENTAL SERVICES SOLID WASTE BUREAU
 4300 29th St. South, Arlington, VA 22206

Printed on 30% post consumer recycled paper

BE A GOLD MEDAL RECYCLER



ARLINGTON VIRGINIA

DEPARTMENT OF ENVIRONMENTAL SERVICES

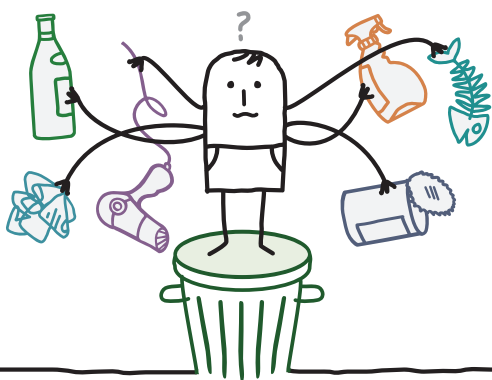
Arlington County's overarching solid waste management goal is to divert 90 percent of solid waste from landfills and incineration by 2038. The path to achieving that goal starts with reducing waste by purchasing only what you need, continues by reusing those products you did buy and ends with recycling what cannot be reused. By applying these principles, in just that order, we conserve resources and help minimize the environmental impacts of the materials we use.

You are an important part of the team! You can help carry the torch for recycling and waste reduction in Arlington. Take part in the games by following the tips below.

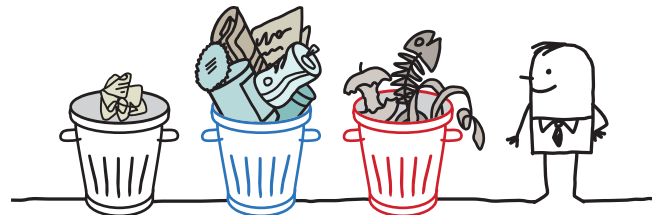


Trash Less

- The best way to manage trash, is to generate less to begin with. A simple change like carrying a reusable coffee mug to your favorite coffee shop or reusable shopping bag to the store eliminates material to be managed after its use.
- Recent samplings of Arlington trash show that paper and cardboard account for 10 percent of what is in the black trash cart. The only paper that belongs in the trash cart are paper towels, napkins and soiled paper products. Make sure you place all other paper, to include newspaper, cardboard, juice boxes, milk, wine & broth cartons, cereal & food boxes, mixed paper, books and magazines in your blue recycling cart.
- Food scraps make up the largest fraction of what's in the residential trash stream. Reduce food waste by purchasing only what you need. Much of what ends up in the trash is food like fresh fruits and vegetables that were not used in time.



Not sure if your pizza box goes in the trash or recycling? To see what is accepted in your curbside carts, check out our online Where Does It Go Directory at recycle.arlingtonva.us.



Recycle Right

- Place recyclables loose in your blue cart or in a paper bag. If you have overflow recyclables, you can place them in a cardboard box next to your blue recycling cart, or set them out in a household container. By not using a plastic bag to hold recyclables, you can help increase efficiencies at the recyclables processing facility.
- Wet and dirty items can contaminate and ruin valuable recyclables. Make sure food and beverage containers are empty and clean, or mostly free from food and other residue before you place them into the blue cart. To clean jars that contained sauce or peanut butter, fill with water, replace the lid and give them a good shake.
- Just because an item has the recycle symbol does not mean it is accepted in your curbside recycling cart. Materials like plastic air pillows for packaging are not recyclable and should be taken back to your local grocery store to be recycled with plastic bags and films.
- When making buying decisions, think about container types. We recommend choosing aluminum over plastic and plastic over glass. Glass is more difficult to recycle regionally because of the lack of outlets that accept it.

NEIGHBORLY TIP...

Dog waste belongs in the black trash cart. Be a good neighbor and place your dog's waste only in your black trash cart, not your neighbor's.



Visit the EPRY Earth Products Recycling Yard 4300 29th St. S

- Instead of letting your home office accumulate paper, shred old documents that contain sensitive personal information like your name, address, phone number, social security number or bank account information. Recycle all other documents. You can bring up to two boxes or bags the first Saturday of every month, except holiday weekends, for free shredding.
- If you are doing small home construction or demolition projects and need to get rid of ceramic tile, concrete, sand, rock or brick, bring them to the EPRY where they can be processed and re-used in County road and construction projects. Do not dispose of these materials in your curbside trash and recycling carts.
- Did you know brush and leaves that are collected throughout the year are recycled into leaf and wood mulch right at the EPRY? Free wood and leaf mulch can be delivered for a fee and is available for pickup for all residents. It is also used for County landscaping projects.

To learn more about services provided at the EPRY, visit recycling.arlingtonva.us/locations/earth-products-yard/.



Food scraps are not accepted in your green organics cart at this time. Please bring them to the EPRY. Food scraps create a nutrient rich compost product to be used by the Department of Parks and Recreation for landscaping projects in public County spaces.