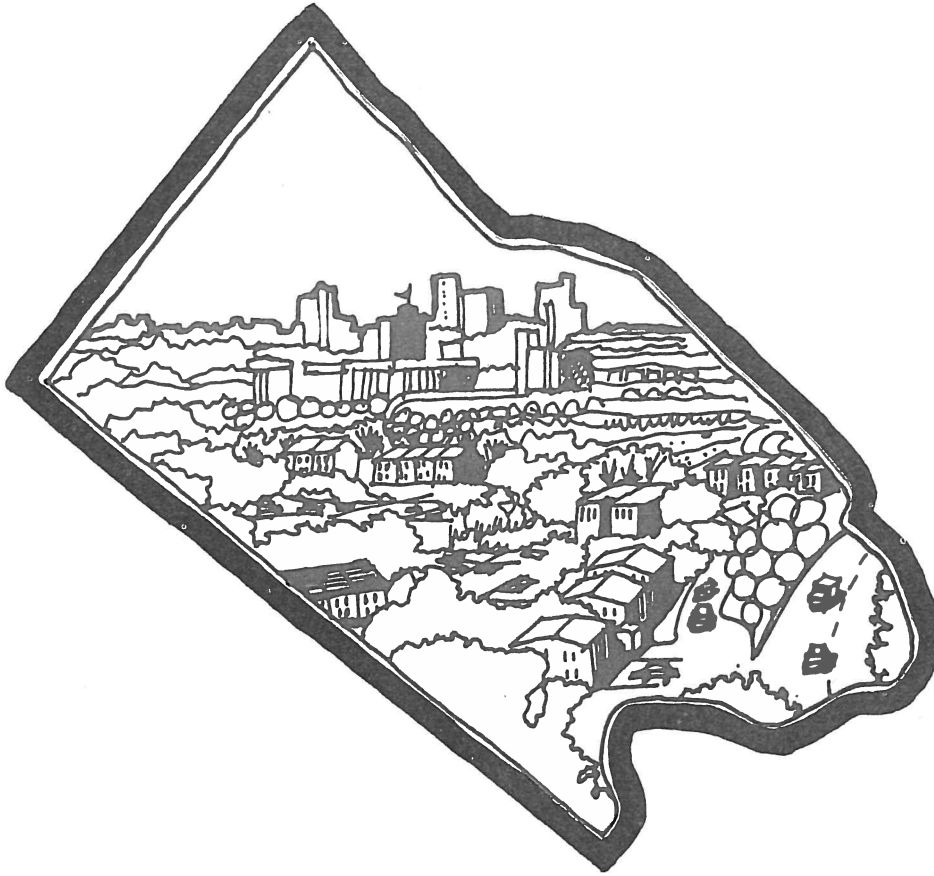


Arlington Virginia



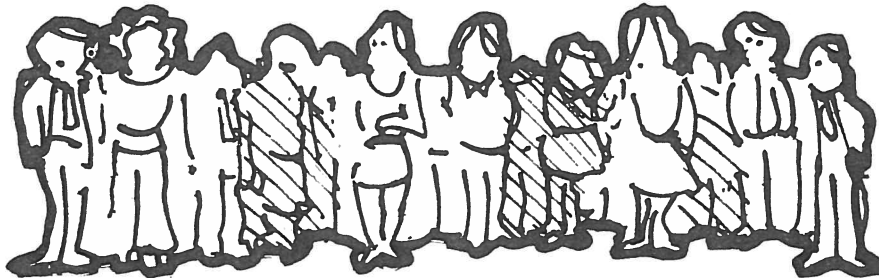
**PROFILE
1984**



POPULATION

<u>Year</u>	<u>Total</u>
1920	16,040
1930	26,615
1940	57,040
1950	135,449
1960	163,401
1970	174,284
1980	152,599
1985*	153,600

*Planning Division Estimate



DEMOGRAPHIC CHARACTERISTICS

TOTAL POPULATION: 1980

White	126,121	(82.6)
Black	14,028	(9.2)
Asian, Pacific Islander	6,631	(4.3)
Other	5,819	(3.9)

Population by Sex: 1980

Male	72,862	(48%)
Female	79,737	(52%)

Population by Age: 1980

Less than 5 Years	6,889	(4%)
5-17 years	18,080	(12%)
18-24 Years	21,227	(14%)
25-34 Years	38,033	(25%)
35-44 Years	19,269	(13%)
45-64 Years	31,419	(20%)
65 and Over	17,682	(12%)
Median Age	32.7 Years	

Marital Status: 1980*

Single	47,659	(36%)
Married	60,102	(46%)
Separated	4,468	(3%)
Widowed	9,158	(7%)
Divorced	11,141	(8%)

*Includes persons 15 years and over

INCOME

1983 Median Household Income*	\$28,724
1983 Median Family Income*	\$38,404
1981 Per Capita Income*	\$19,519

*Source: Tayloe Murphy Institute Estimate

EMPLOYMENT

AT-PLACE EMPLOYMENT BY INDUSTRY: 1980*

Agriculture, Mining & Construction	4,200	(3%)
Manufacturing	1,400	(1%)
Transportation, Communications, Utilities	8,900	(6%)
Trade	16,300	(12%)
Finance, Insurance & Real Estate	5,400	(4%)
Services	30,000	(21%)
Government	71,000	(50%)
Miscellaneous	4,800	(3%)
Total	142,000	(100%)

*Planning Division Estimate

DAYTIME POPULATION 200,000

ARLINGTON COUNTY LABOR FORCE

Civilian Labor Force 1983	87,152
Average Unemployment Rate 1983*	3.9%

*Virginia Employment Commission

OFFICE SPACE CONSTRUCTION

1960 - 1969	7,514,300 sq. ft.
1970 - 1979	4,729,650 sq. ft.
1980 - 1983	3,982,200 sq. ft.
Total	16,226,150 sq. ft.



HOUSING

<u>Total Housing Units: 1982*</u>	<u>76,200</u>
Single-Family Detached	26,277
Single-Family Other (incl. townhouses)	4,472
Garden Apartments	24,810
High-Rise Units	20,641
 Condominium and Cooperative Units (all structure types)	 12,240

*Planning Division Estimate

<u>Total Occupied Housing Units: 1980</u>	<u>71,615</u>
Owner-Occupied	27,619 (39%)
Renter-Occupied	43,996 (61%)
 Average Rents 1981	 \$387
Median Rents 1981	\$375

Average Assessed Value of Single-Family Detached Housing Units, 1984	\$116,000
--	-----------

Total Households: 1980

71,615

1-person	28,953 (40%)
2-person	24,003 (34%)
3-person	9,230 (13%)
4-person	5,656 (8%)
5-person	2,321 (3%)
6+person	1,452 (2%)

Household Population 1980

148,515

Group Quarters

4,084

Average Household Size 1980

2.07 persons



EDUCATION

PUBLIC SCHOOL ENROLLMENT

<u>Year</u>	<u>Students</u>
1950	16,080
1960	25,240
1970	24,760
1980	14,720
1981	14,536
1982	14,642
1983	14,515

PUBLIC SCHOOLS:

21	Elementary
4	Intermediate
3	High School
1	Special Education

PUPIL: TEACHER RATIO

24.5:1
19.5:1
19.5:1
8:1

COLLEGES AND UNIVERSITIES

George Mason University Law School

Marymount College

National Graduate University

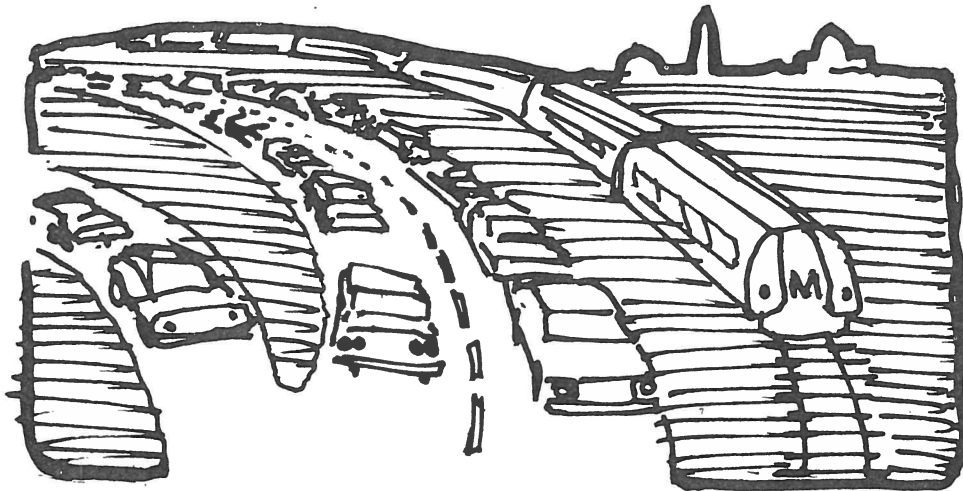
Strayer College

COMMUNITY FACILITIES

Hospital Beds	758
Nursing Home Beds	680
Apartments for Elderly	745
Libraries	7
Fire Stations	10
No. Va. Regional Parks	2
County-Operated Parks	54
Bicycle & Jogging Trails	57 miles
Nature Centers	2
Recreation Centers	27

HOTELS AND MOTELS

Number of Hotels/Motels	31
Number of Rooms	6,865
Number of Rooms (site plan approved)	4,596



TRANSPORTATION

MAJOR HIGHWAYS

I-395	U.S. Route 1
I-66	U.S. Route-29-211
George Washington Pkwy.	U.S. Route 50

RAILROAD

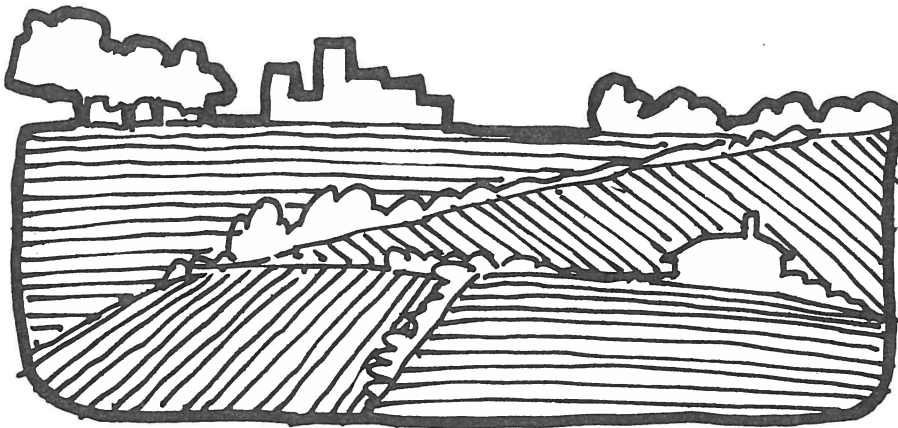
**RICHMOND FREDERICKSBRUG and
POTOMAC RAILROAD** (Passenger connections
via Metro subway to Union Station in
Washington, D.C.)

AIR

NATIONAL AIRPORT, Arlington, Va. (Metro access)
DULLES INTERNATIONAL AIRPORT, Fairfax, Va.
(30 minutes by car)
BALTIMORE-WASHINGTON INTERNATIONAL,
Baltimore, Md. (45 minutes by car)

RAPID TRANSIT

11 Metro subway stations: ORANGE LINE Stations serving Rosslyn, Court House, Clarendon, Virginia Square and Ballston, East Falls Church (projected opening 1986); BLUE LINE Stations serving Rosslyn, Arlington National Cemetery, Pentagon, Pentagon City, Crystal City and National Airport; YELLOW LINE Stations serving Pentagon, Pentagon City, Crystal City and National Airport.



LAND AREA AND OPEN SPACE

Area	25.8 sq. mi
Population Density	5,919 persons/sq. mi.
County Open Space	750 ac. (excluding schools)
Federal Open Space	900 Acres
Regional Open Space	94 Acres
Percentage of Total County	
Area in Open Space	10.6%
Percentage of Total	
County Area in County	
Open Space	4.6%
County Open Space per	
1,000 Residents	4.6 Acres
Elevation (Highest Point)	445 Feet

Planning, Housing, and Community Development Division
Arlington County
Holmes Building — 3rd Floor
2100 N. 14th Street
Arlington, Virginia 22201
703-558-2391